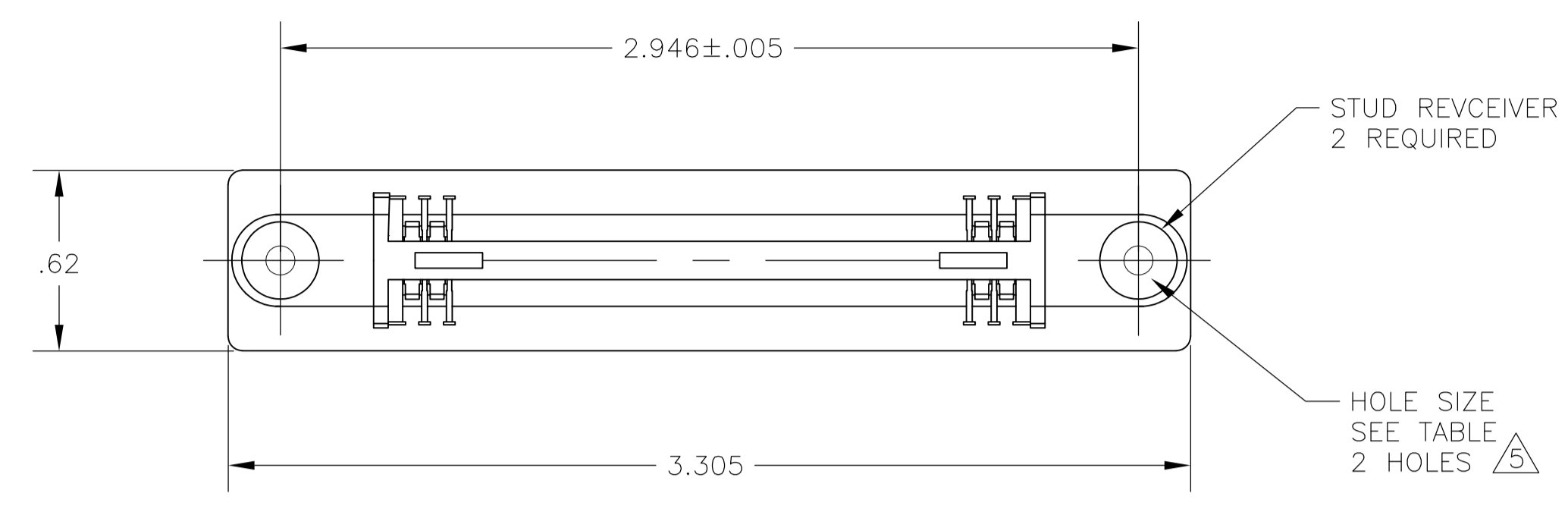


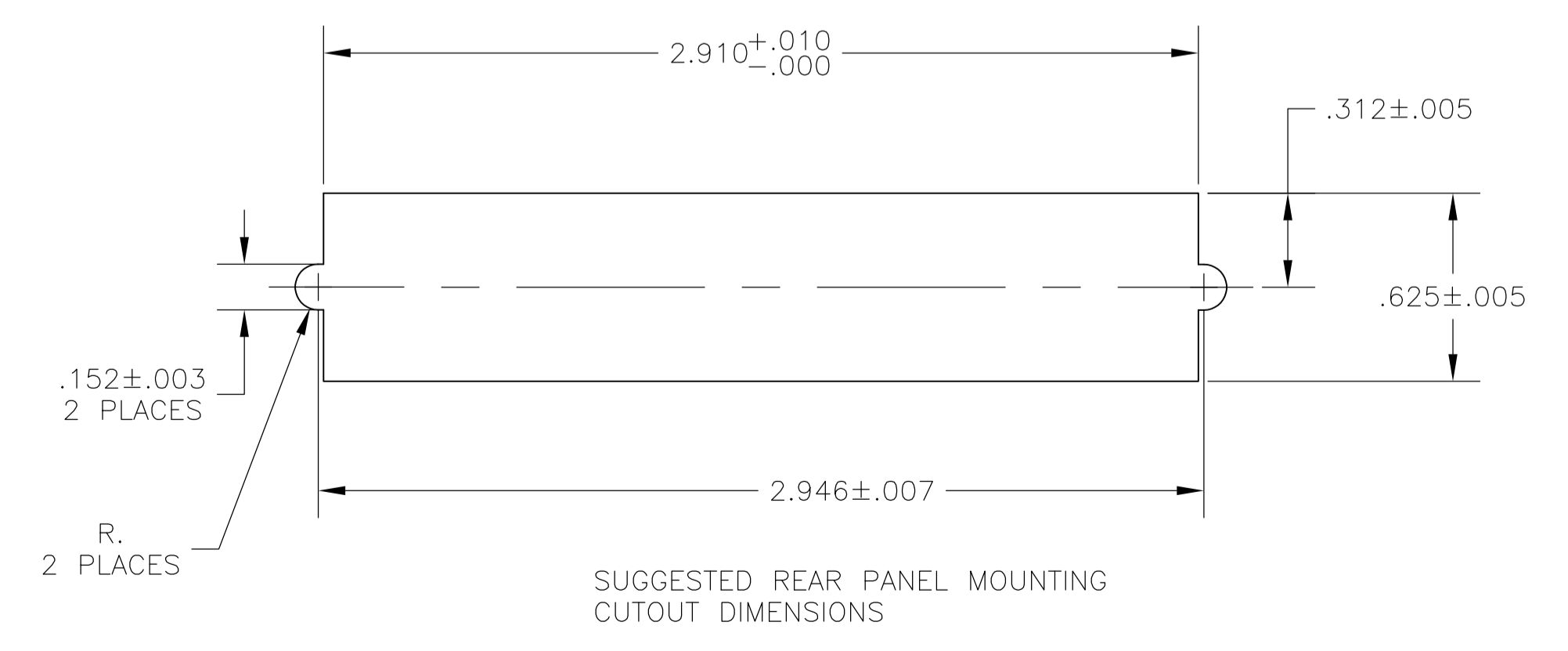
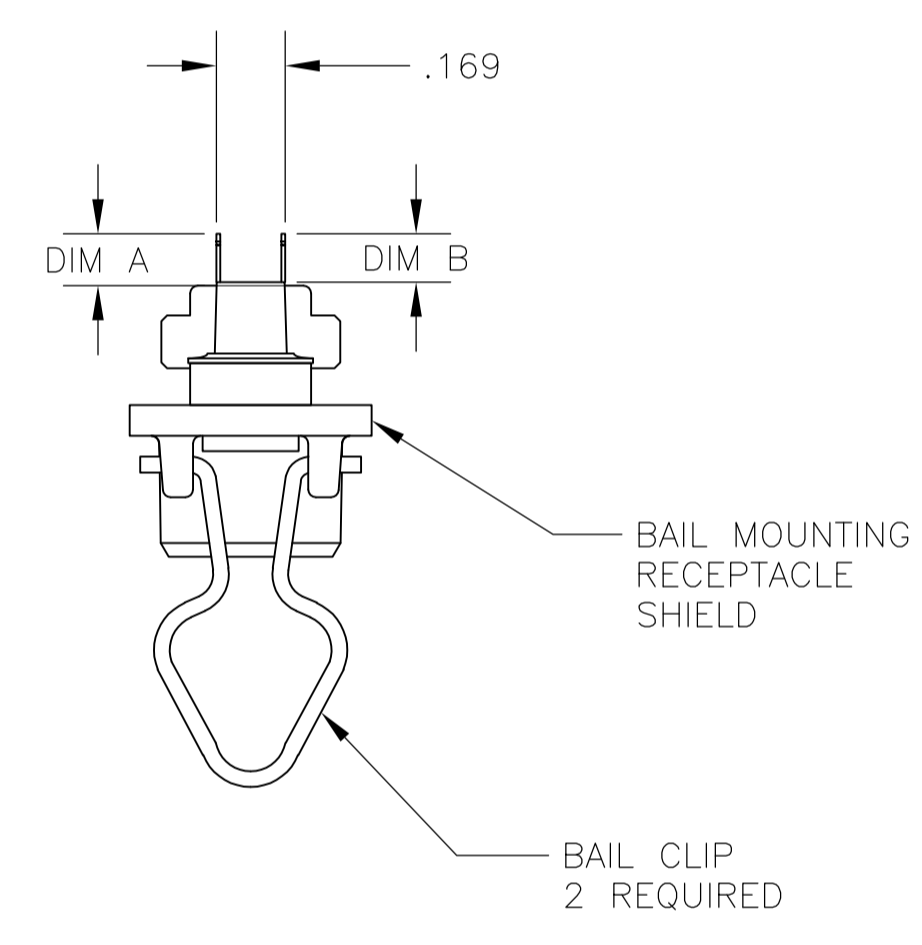
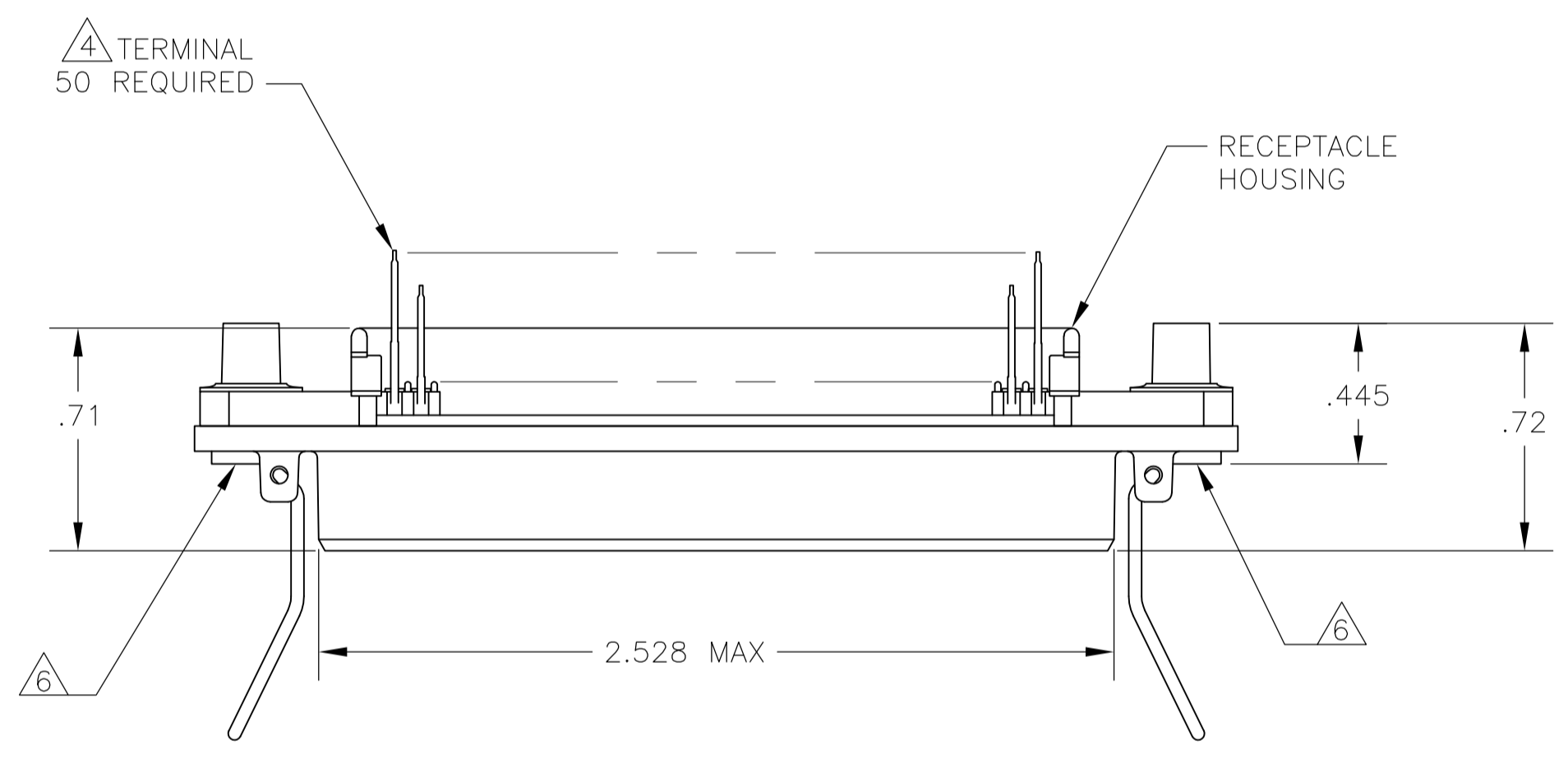
LOC		DIST		REVISIONS			
GP	00	REV	DATE	DESCRIPTION	DATE	BY	APPV
S		1	18APR08	REVISED PER ECO-08-007327		BM	WM



1. THE CONTACT SURFACES OF THE TERMINALS ARE COATED WITH LUBRICANT.
2. ALL DIMENSIONS SHOWN ARE FOR REFERENCE ONLY UNLESS OTHERWISE SPECIFIED.

3 MATERIAL:
 HOUSING - THERMOPLASTIC, BLACK.
 TERMINAL - PHOSPHOR BRONZE PLATED WITH EITHER .000030 MIN GOLD PLATE OR GOLD FLASH OVER PALLADIUM NICKEL PLATE, .000030 MIN TOTAL ON MATING SURFACE. .000120 MIN TIN-LEAD PLATE ON TAILS OVER .000050 MIN NICKEL UNDERPLATE OVER ENTIRE TERMINAL.
 STUD RECEIVER - STAINLESS STEEL
 BAIL CLIP - STAINLESS STEEL
 SHIELD - NICKEL PLATED DIE CASTING.

- 4 CENTER-TO-CENTER SPACING OF TERMINALS IS .085.
 5 HOLES TO BE TAPPED AFTER PLATING.
 6 OBSOLETE.



.232 + PANEL THICKNESS	.197 + PCB THICKNESS	4-40 UNC-2B	.185	.200	554216-4
PANEL SIDE	PCB SIDE	HOLE SIZE	DIM B	DIM A	554216-3
RECOMMENDED HARDWARE FOR SCSI (PAN HEAD SCREW LENGTH)					
THIS DRAWING IS A CONTROLLED DOCUMENT.		Tyco Electronics Corporation Harrisburg, PA 17105-3608			
DIMENSIONS: INCHES		TOLERANCES UNLESS OTHERWISE SPECIFIED:		NAME: RCPT ASSY, 50 POSN, VERT MTG, SHLD, BAIL LK, CHAMP	
0 PLC ± -		1 PLC ± -		2 PLC ± -	
3 PLC ± -		4 PLC ± -		ANGLES ± -	
MATERIAL 3		FINISH 3		SIZE: A1 00779 C=554216	
CUSTOMER DRAWING		SCALE: 2:1		SHEET 1 OF 1 REV S	